

Using Surrey Online School



If you experience any difficulties or need further guidance, please don't hesitate to call 01483 519 800; a member of the SOS Team will be more than happy to assist you.

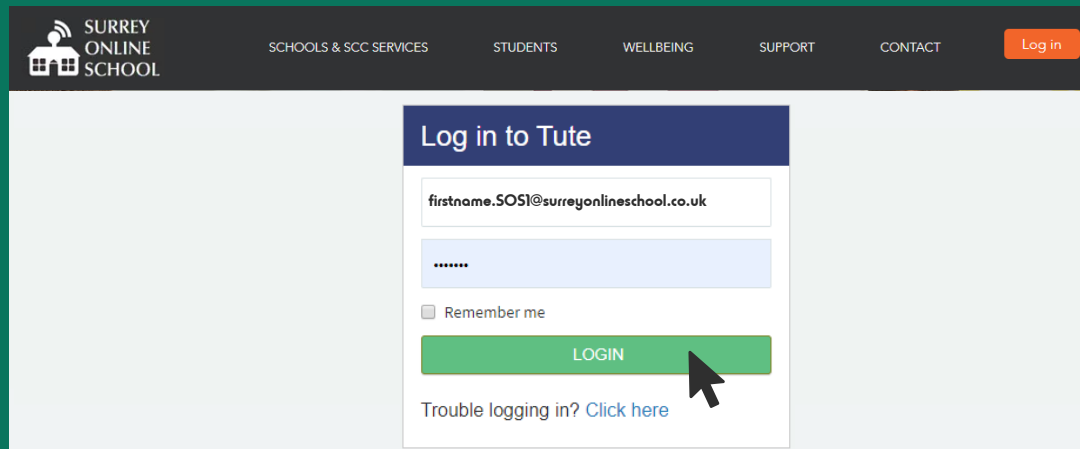
Log in

Navigate to www.surreyoneschool.co.uk and click 'Log in'

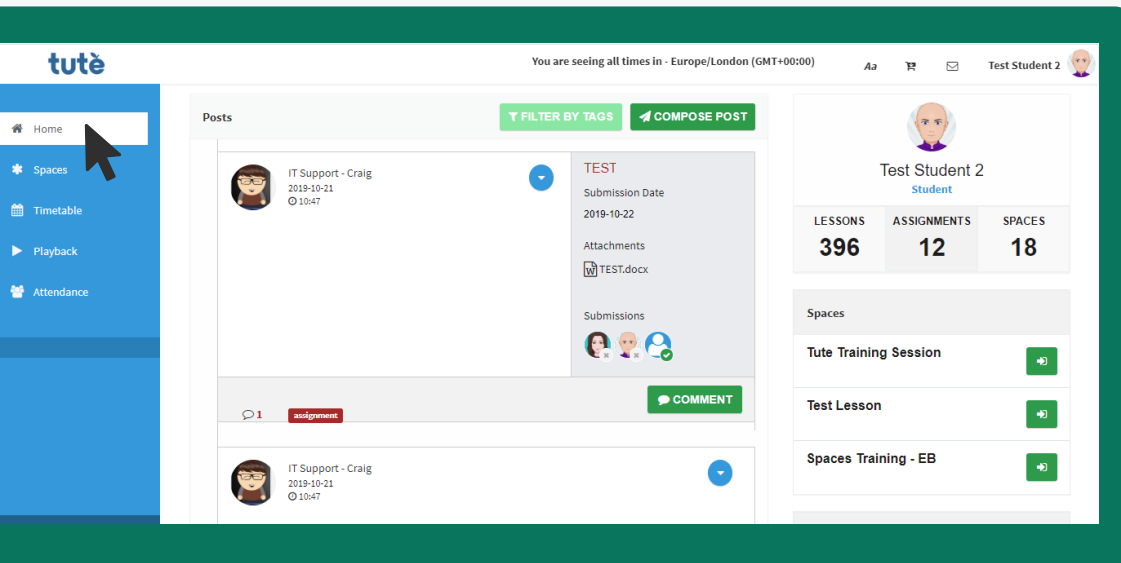
Enter your username and password

Your username will be in the format: `firstname.SOS1@surreyoneschool.co.uk`

Please note: if you enter your password incorrectly 3 times, you'll need to phone the SOS office to unlock your account. To do this please call 01483 519 800 and have your username to hand



To watch a video on logging in and what you can expect in The Learning Cloud, please click here

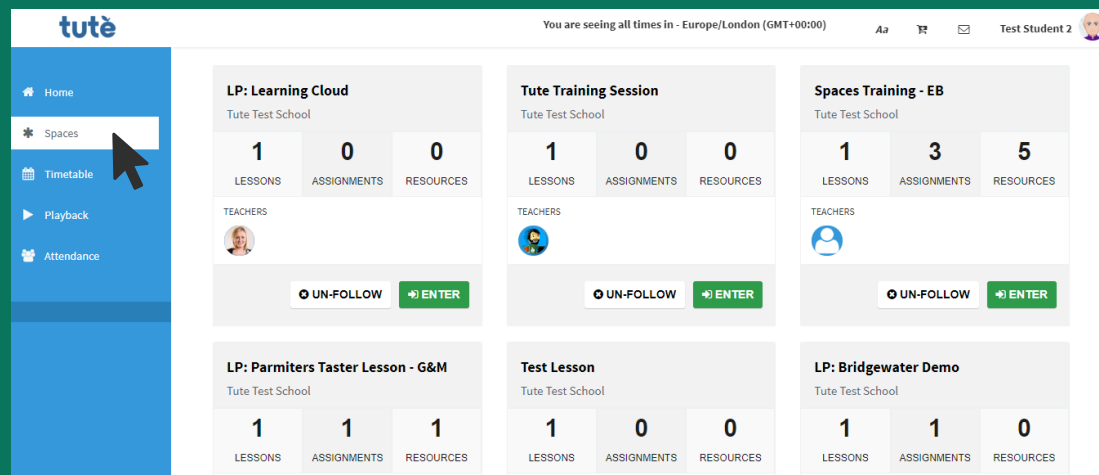


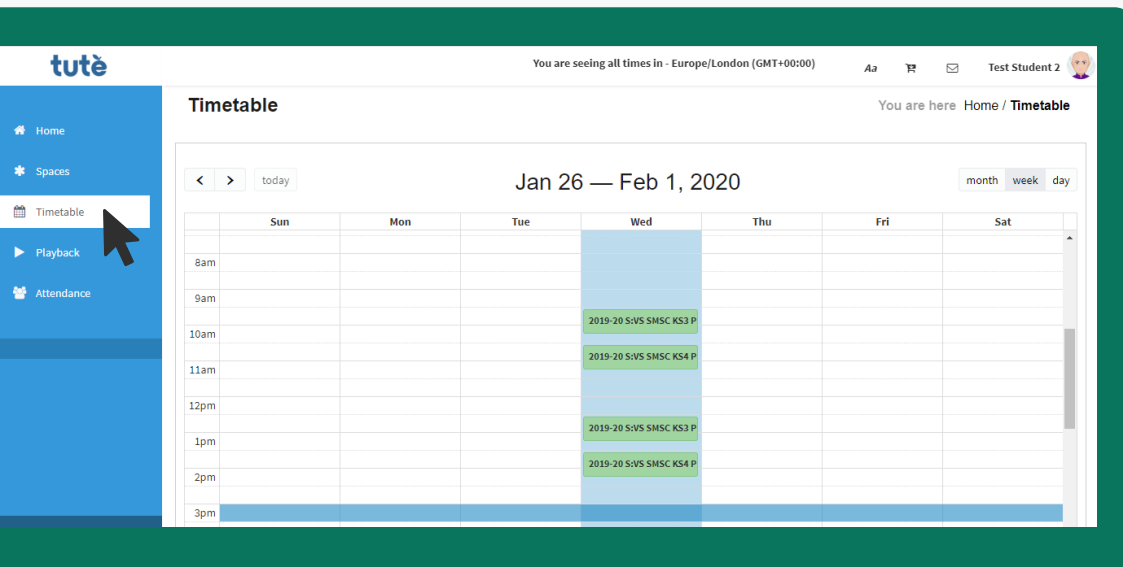
Home

This takes you to your home page, the page you see when you log in. The latest posts from your Tute teachers and classmates will show here (if homework is included in your lessons).

Spaces

If your lessons include homework and independent learning, this is where you'll find them! A Tute Space is where your teacher will post assignments, set homework and provide useful resources. You can submit your work here and ask for help from your teacher.



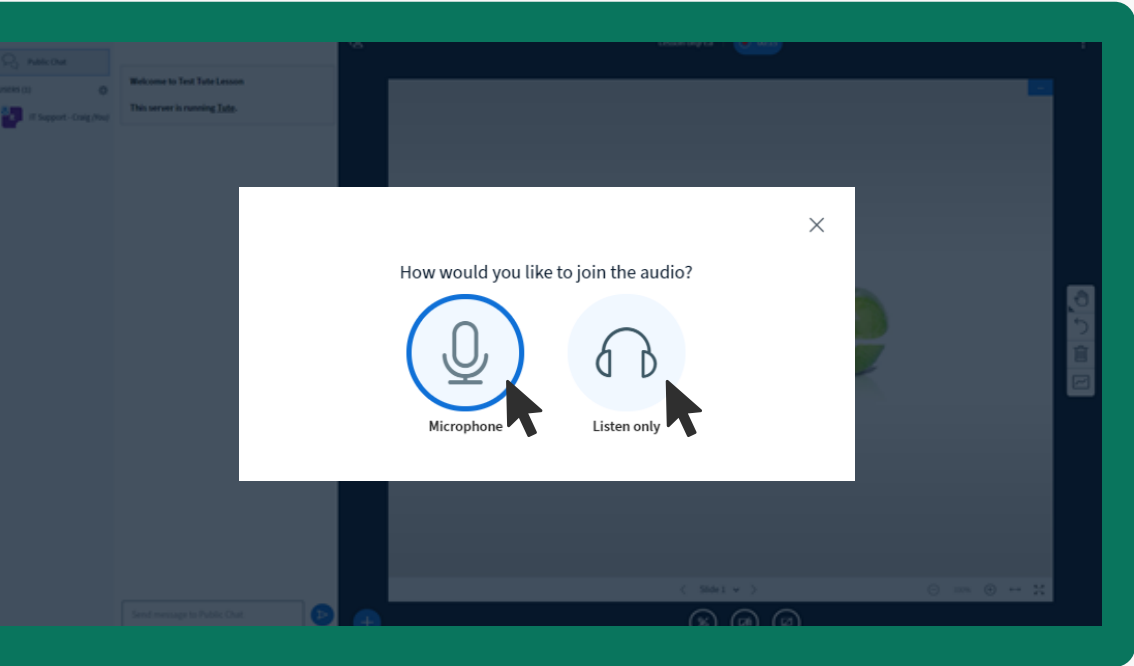
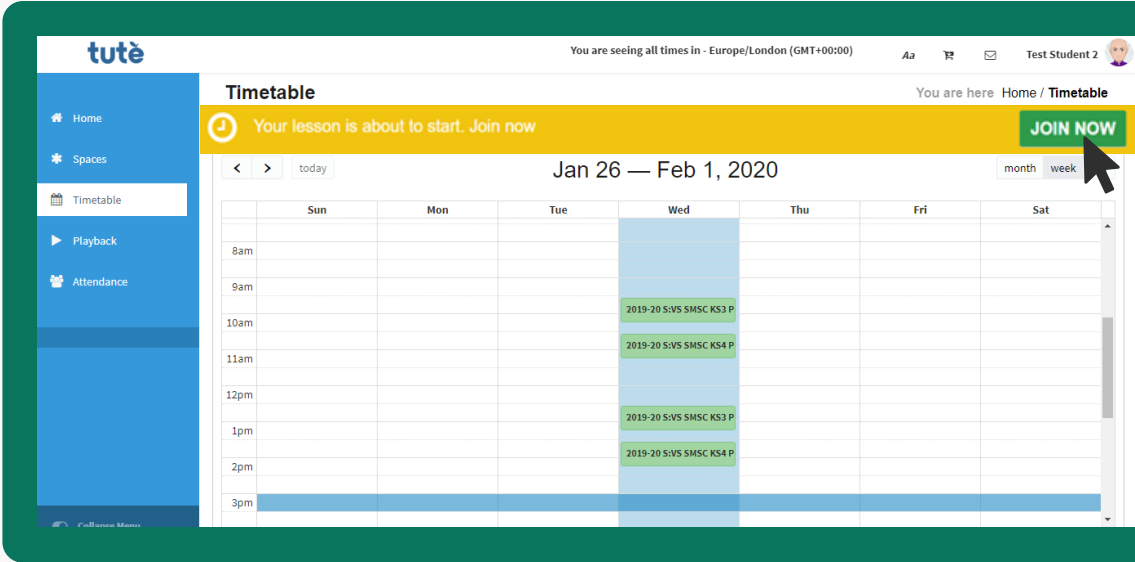


Timetables

All of the lessons that you're enrolled onto will show here, in your personal timetable. Hovering over the lessons will show you more info and when it's time for the lesson, you just click it and it will take you to the Learning Cloud – the online classroom where your teacher will be waiting.

Join lesson

If your lesson is about to start, you will see a yellow banner across the top of the page. Just click the green "Join Now" button and it will take you to the Learning Cloud – the online classroom where your teacher will be waiting.



Allow audio

You have the option to join microphone or just listen only. You have to choose one to hear your teacher, but which one you choose is up to you. If you miss this step, just log out and log back in.

tutè

You are seeing all times in - Europe/London (GMT+00:00)

All playbacks are available for 30 days.

Search:

Lesson Date Time	Title	Available	Tutor	Student	ACTIONS
2020-01-29 13:30	2019-20 S/V/S SMSC KS4 Programme B A 21 - Playback 1	Available	Chloe Bullock (CT)	Test Student 2	ACTIONS
2020-01-29 12:30	2019-20 S/V/S SMSC KS3 Programme B A 21 - Playback 1	Available	Chloe Bullock (CT)	Test Student 2	ACTIONS
2020-01-29 10:30	2019-20 S/V/S SMSC KS4 Programme A A 21 - Playback 1	Available	Liz Rumsey (ET)	Test Student 2	ACTIONS
2018-02-09 09:30	2017-18 VS: Programme B KS3 English Progress B 22 - Playback 1	Unavailable	Sheila Petoud (CT)	Test Student 2	ACTIONS
2018-02-08 09:30	2017-18 VS: Programme B KS3 English Progress A 22 - Playback 1	Unavailable	Emma Dutton (ET)	Test Student 2	ACTIONS
2018-01-17 16:15	Tute Training - Playback 1	Unavailable	Rob Hughes (ET)	Test Student 2	ACTIONS
2017-12-14 14:45	Lesson 2 - Playback 1	Unavailable	Liz Rumsey (ET)	Test Student 2	ACTIONS
2017-10-17 14:00	Law Update A 1 - Playback 1	Unavailable	Steve Harris (ET)	Test Student 2	ACTIONS
2017-10-06 08:00	Microtech - Spanish A 1 - Playback 1	Unavailable	Helen	Test Student 2	ACTIONS

Playback

All Tute lessons are recorded. You can access the lessons by clicking here and filtering to find the one you need. It's a great revision tool, fantastic when you've missed a lesson and it's something that we can share with your teachers too. You might need to scroll to get to the point where your teacher started the lesson.

Attendance

Attending lessons is important for your progress. This tab allows you, and teachers, to look at your attendance data. This is captured automatically when you log in (or don't log in!) to a lesson. An email is sent to your contact if you're late and we always report any absence; it's very important for them to check that you're ok.

tutè

You are seeing all times in - Europe/London (GMT+00:00)

Attendance

Lesson Title	Course	School
Spaces TEST Course A 1	Spaces TEST Course	Tute Test School
2019-20 S/V/S SMSC KS4 Programme B A 21	2019-20 S/V/S SMSC KS4 Programme B	Tute Test School
2019-20 S/V/S SMSC KS4 Programme A A 21	2019-20 S/V/S SMSC KS4 Programme A	Tute Test School
2019-20 S/V/S SMSC KS3 Programme B A 21	2019-20 S/V/S SMSC KS3 Programme B	Tute Test School
2019-20 S/V/S SMSC KS3 Programme A G1 A 21	2019-20 S/V/S SMSC KS3 Programme A G1	Tute Test School
Tute Training		Tute Test School
Lesson 3		Tute Test School
Lesson 2		Tute Test School
Law Update A 1	Law Update	Tute Test School
Tute Training Session A 1	Tute Training Session	Tute Test School

Attendance

OnTime: 10.3 %

Late: 11.2 %

Absent: 78.4 %

Happy to help

If you experience any difficulties or need further guidance, please don't hesitate to call; a member of the SOS Online Team will be more than happy to assist you.

01483 519 800

